



Shell's Sustainability Approach

18 May 2018

Challenges for Energy Solutions

- Oversized Population
 - Urbanization, a global phenomenon – 3 out of 4 individuals living in cities by 2050.
 - Five fundamental needs common to most cities: energy; mobility; living; urban planning; and environment.
- Digital Disruption
- Social Divide
 - Energy Solutions to focus on opportunities in economy, social and environment.
- Climate Change



Our approach

- The world needs to produce more energy with fewer emissions greenhouse gases if global society is to meet its development and environmental goals.
- Achieving these goals will require significant shifts in the way the world produces and uses energy over the course of this century.
- Shell's long-term success relies on our ability to provide much-needed energy and related products in a way that is commercially competitive as well as socially and environmentally responsible.



Shell's Approach to the Sustainable Development Goals



New Energy



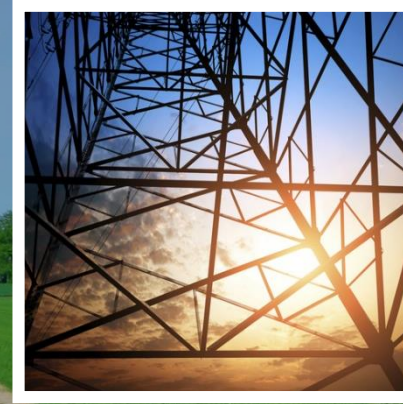
Biofuels

Conventional & advanced biofuels



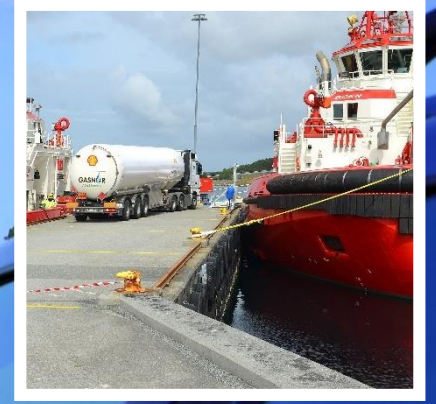
Hydrogen

Active in hydrogen electric



Electric Mobility

Exploring a role in the charging of EVs



Gas for transport

Offering gas to liquids (GTL) and liquefied natural gas (LNG)

SOCIAL INVESTMENT VISION

The Shell Company of Thailand aspires to be a leader in **providing social development** programmes that contribute to goodwill and lifelong learning, and fulfilling our personal goals for **self sustaining actions**



