

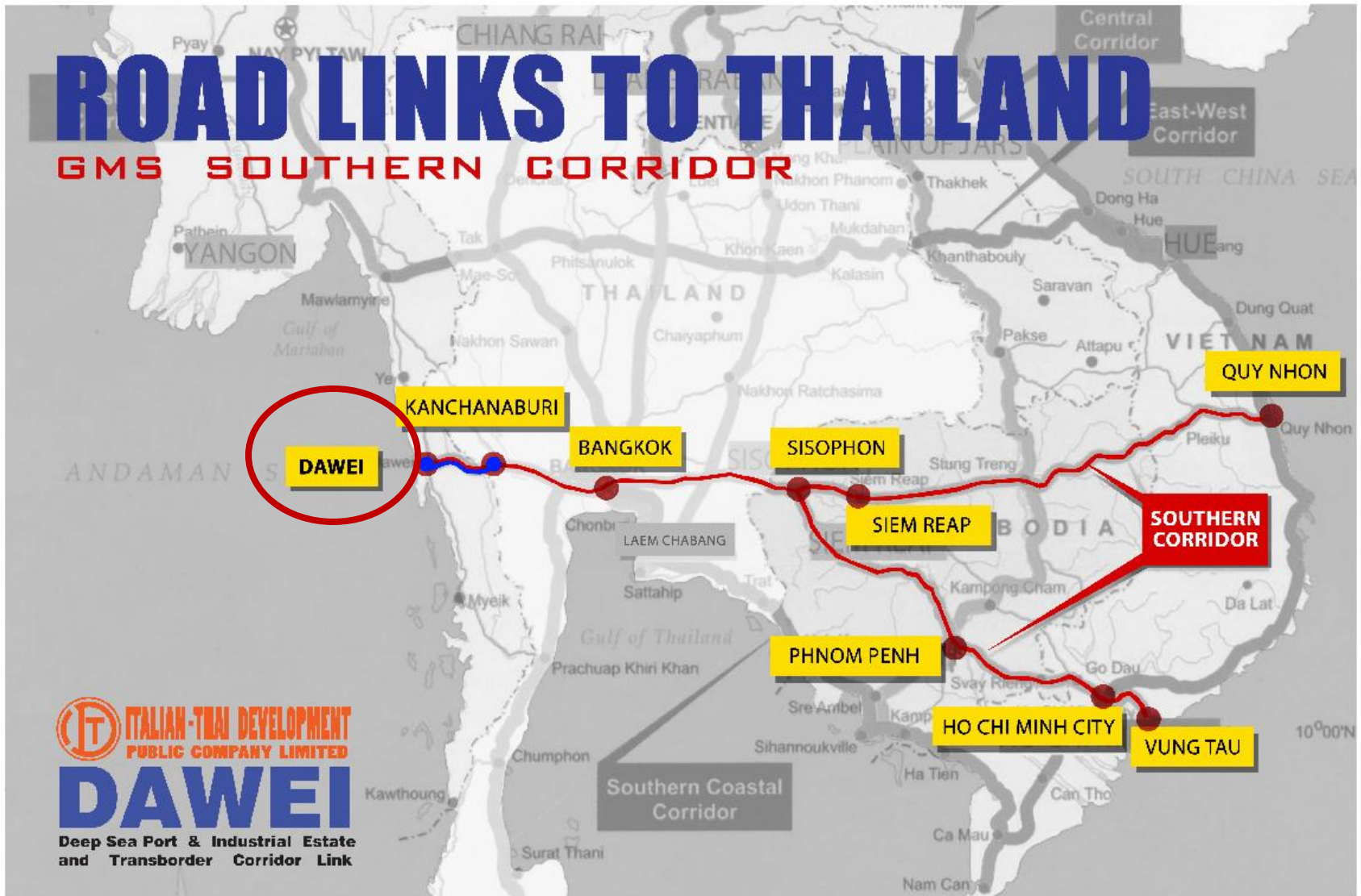
The Dawei Industrial Estate and Deep Sea Port:

- **Enhancing Thailand's Competitiveness Through **the Globe's New Hub of the 21st Century****
- **Leading changes in AEC**

By
Dr. Somchet Thinaphong,
Managing Director,
Dawei Development Company Limited

ROAD LINKS TO THAILAND

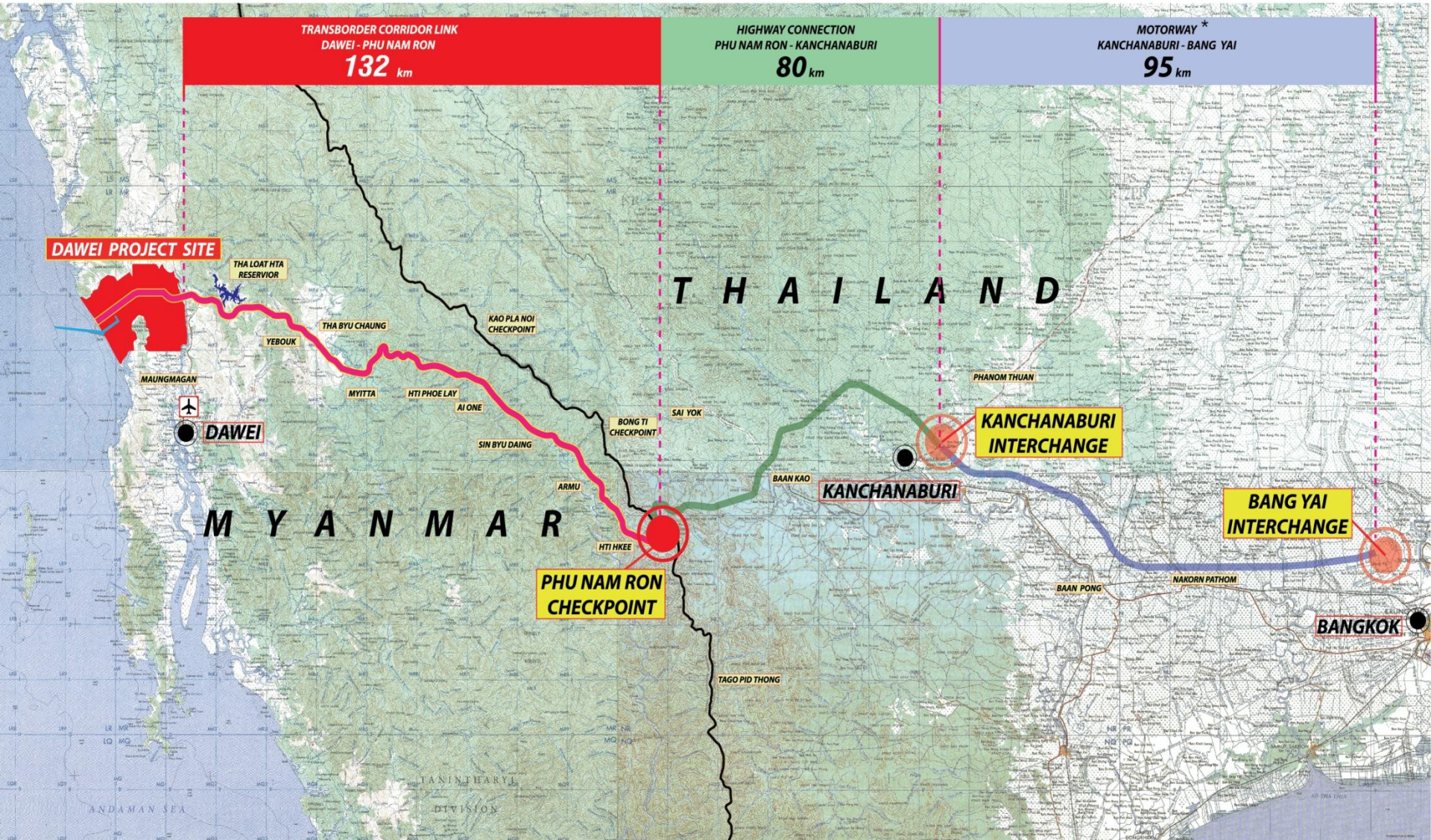
GMS SOUTHERN CORRIDOR



- Road-Rail and Harbor Linkages

How to get there

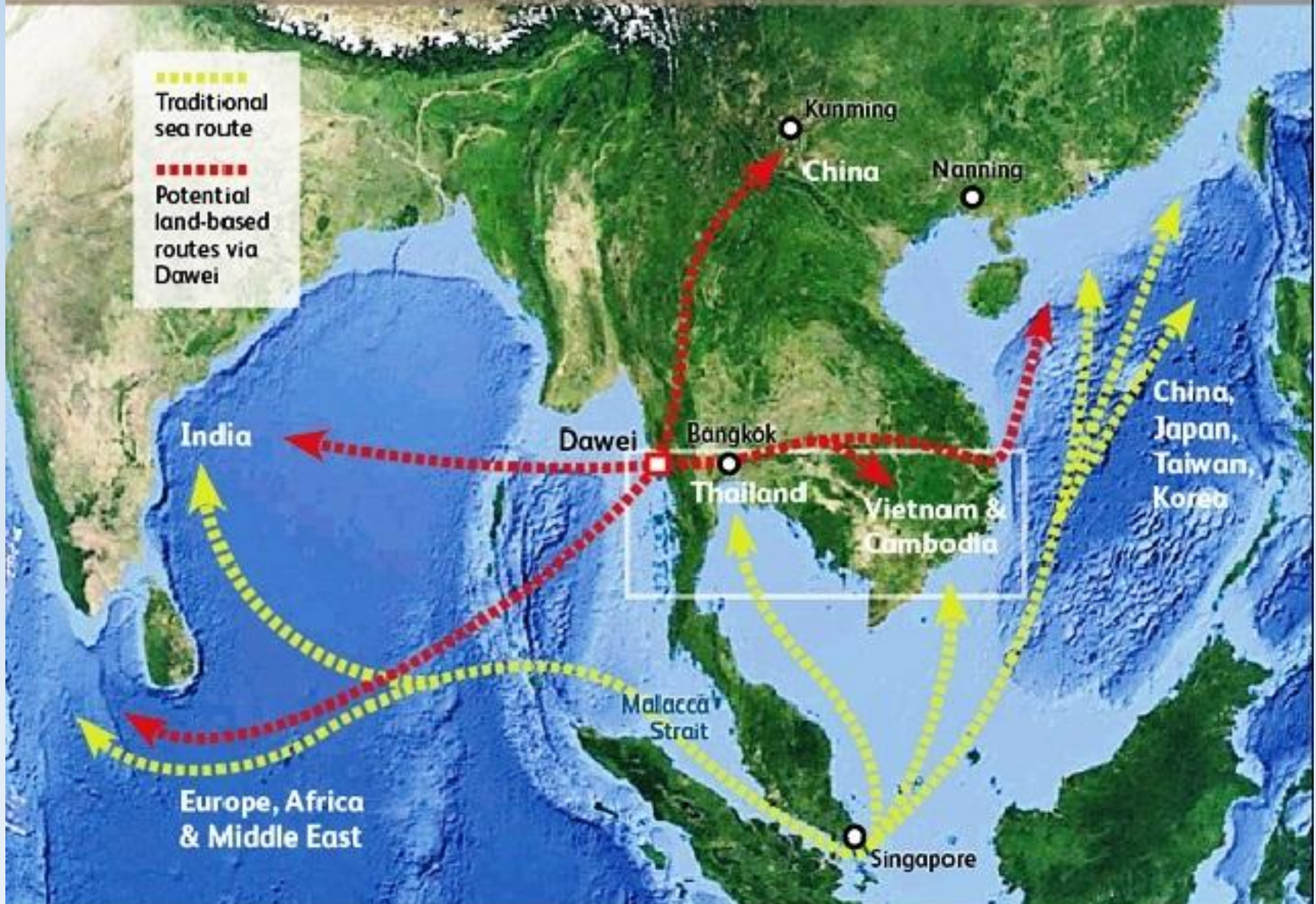
PROJECT ZONING TRANSBORDER CORRIDOR LINK



NOTE* DETAILED DESIGN OF THE "KANCHANABURI - BANGYAI" MOTORWAY COMPLETED BY THE THAI DEPARTMENT OF HIGHWAYS, MINISTRY OF TRANSPORT.

A New Gateway for the East?

The Dawei deep-sea port is intended to become one end of a land bridge for freight, linking India, Africa and Europe with China and other East Asian nations and replacing the longer and often pirate-patrolled sea route through the Malacca Strait



“An Industrial Project That Could Change Myanmar”

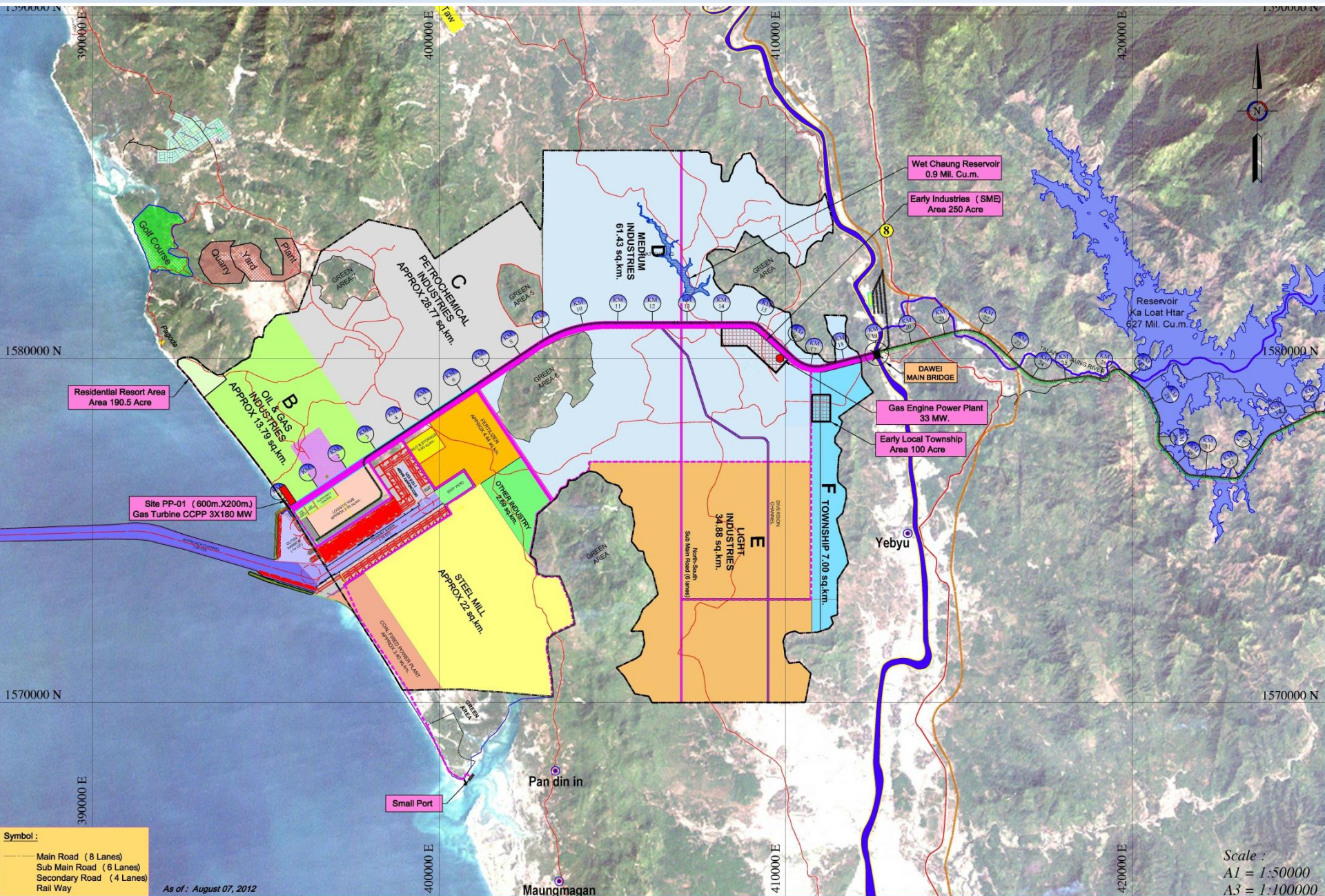
The New York Times



www.daweidevelopment.com

PROJECT LAYOUT

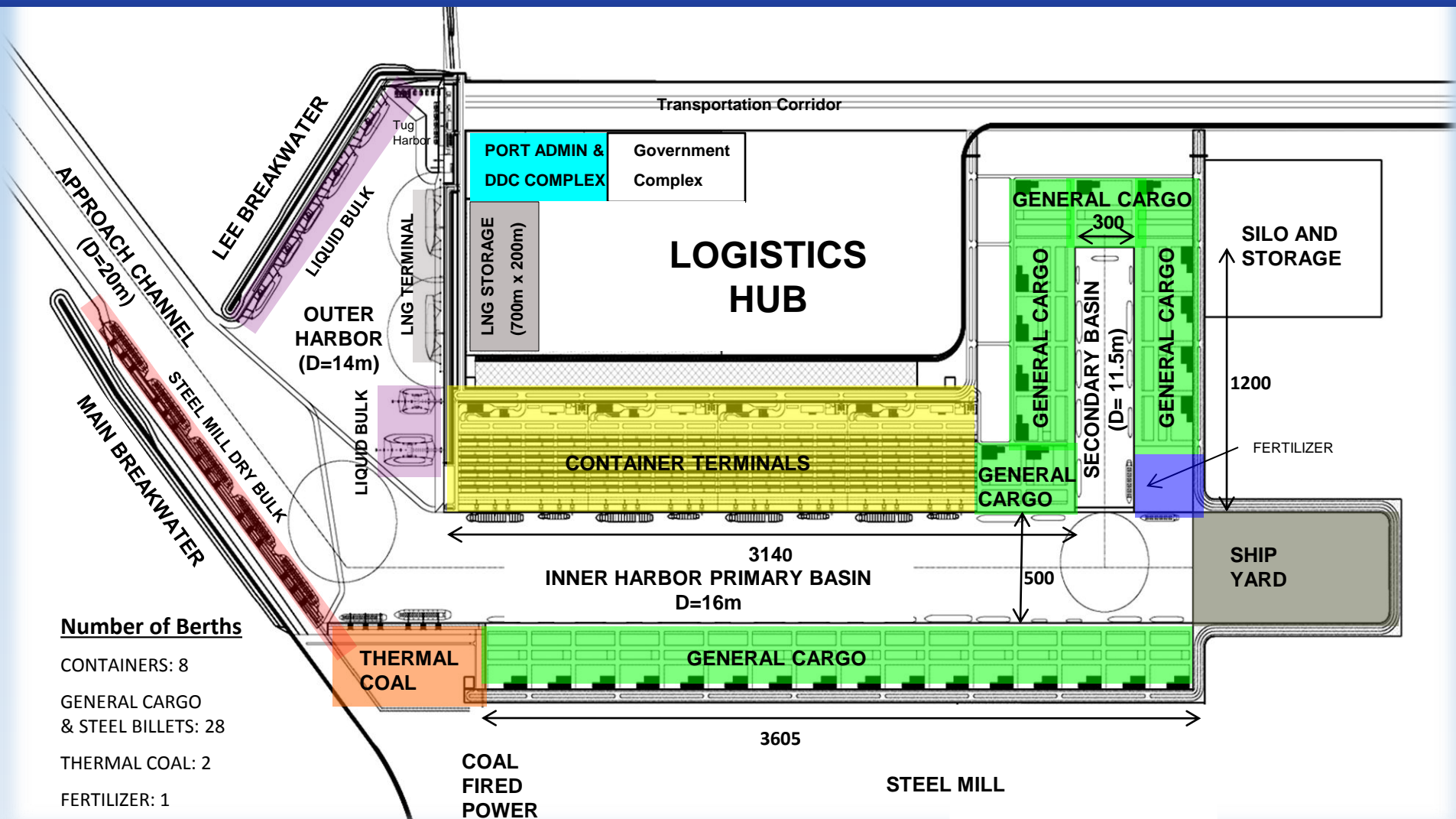
Project Area: 204.5 km²



As of: August 07, 2012

Scale :
A1 = 1:50000
A3 = 1:100000

Dawei Deep Sea Port Project



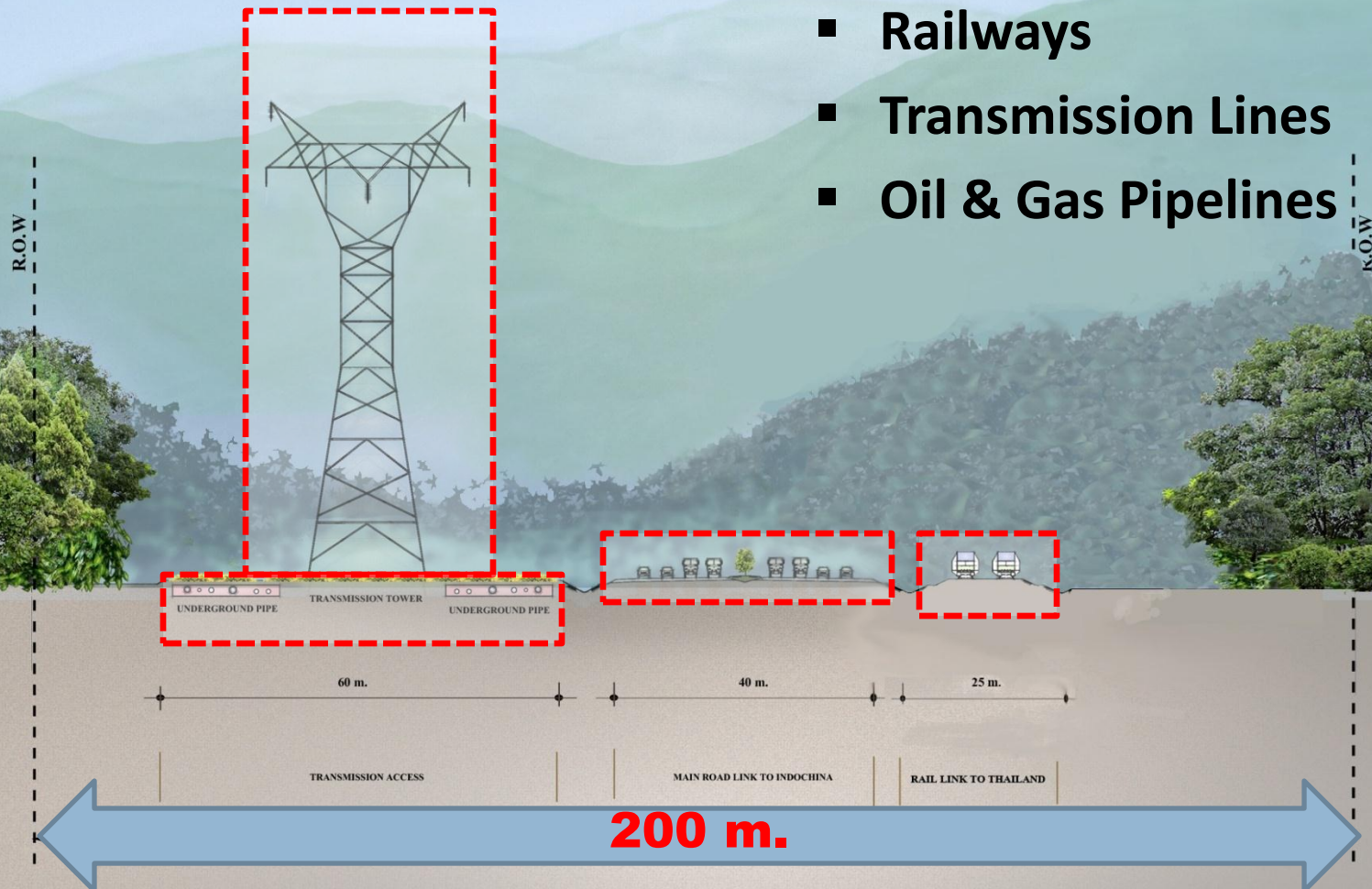
Number of Berths

- CONTAINERS: 8
- GENERAL CARGO & STEEL BILLETS: 28
- THERMAL COAL: 2
- FERTILIZER: 1
- STEEL MILL DRY BULK: 5
- LIQUID BULK: 8
- LNG BERTHS: 2
- TOTAL = 54 BERTHS**

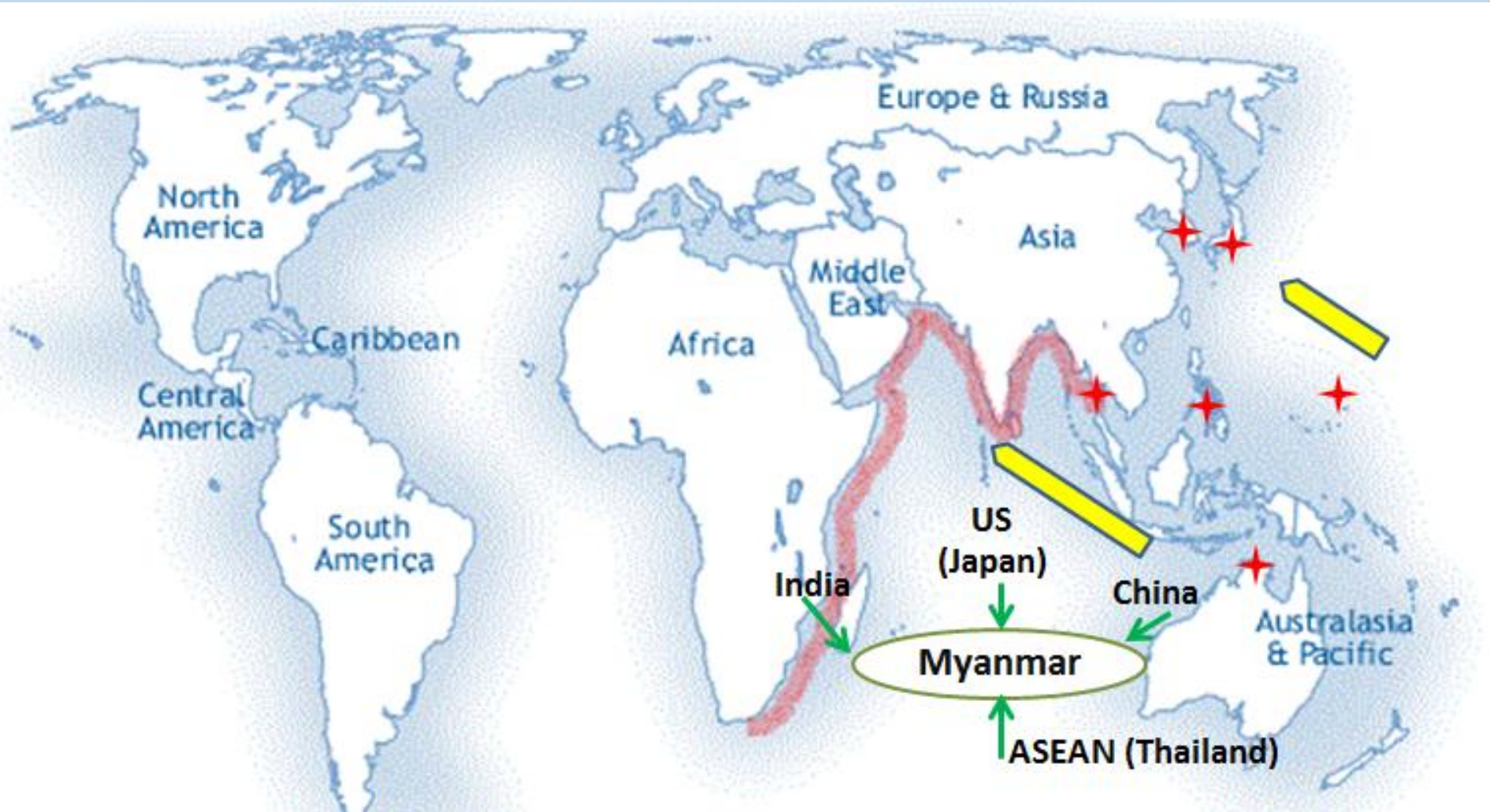
FULL PHASE DEVELOPMENT

Corridor Link To Thailand

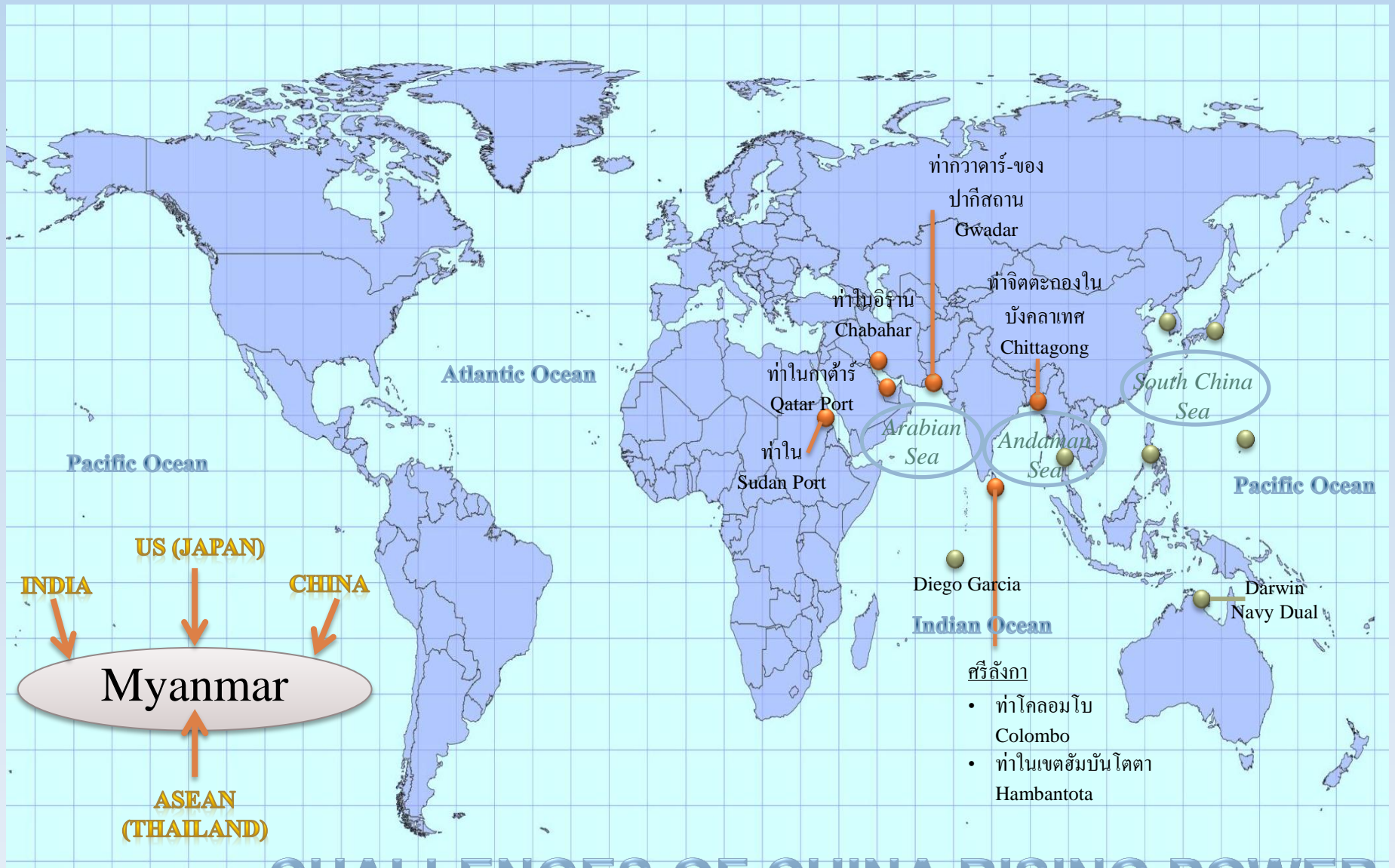
- Roads
- Railways
- Transmission Lines
- Oil & Gas Pipelines



Indian Ocean : Dual Strategy

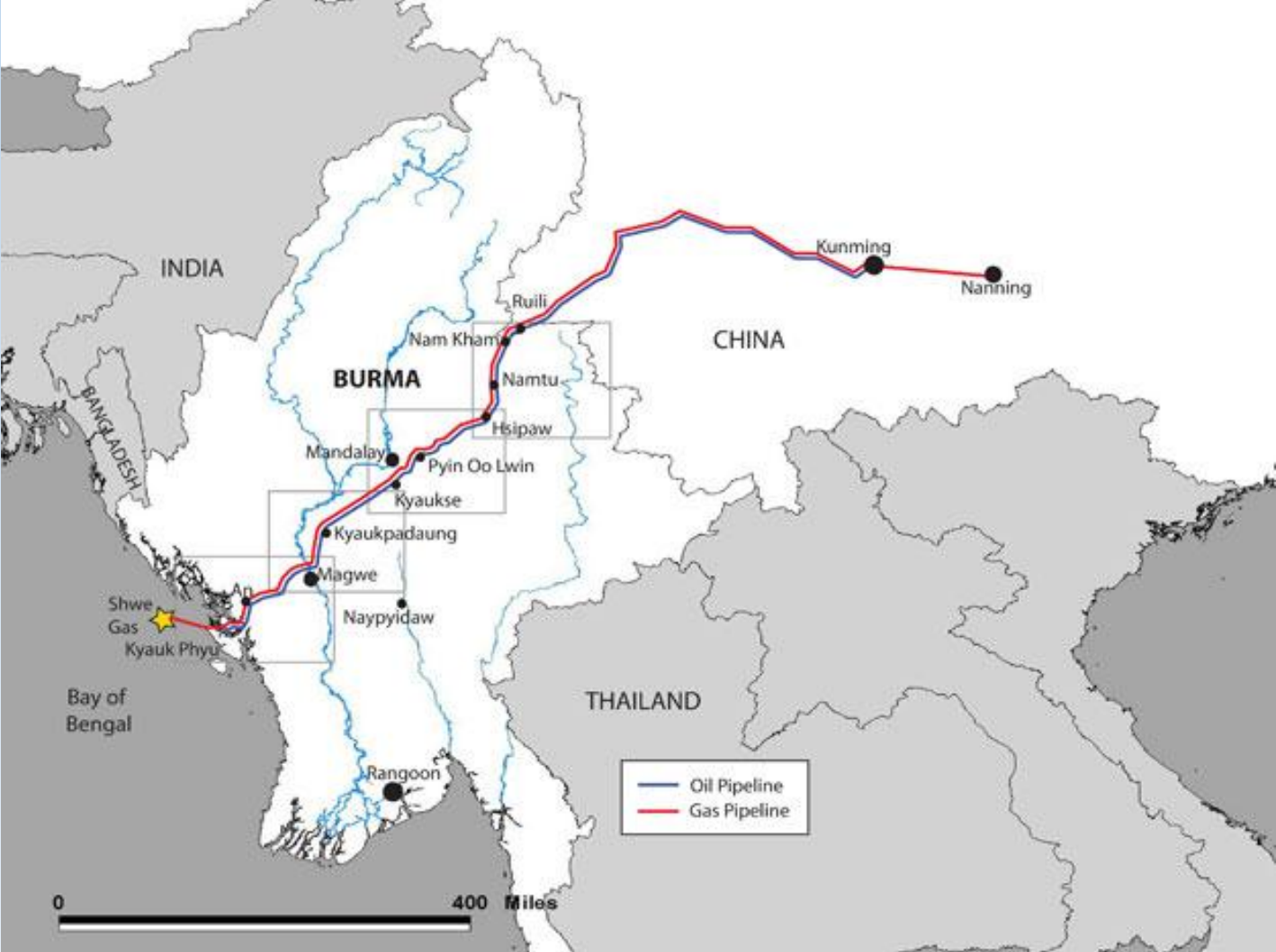






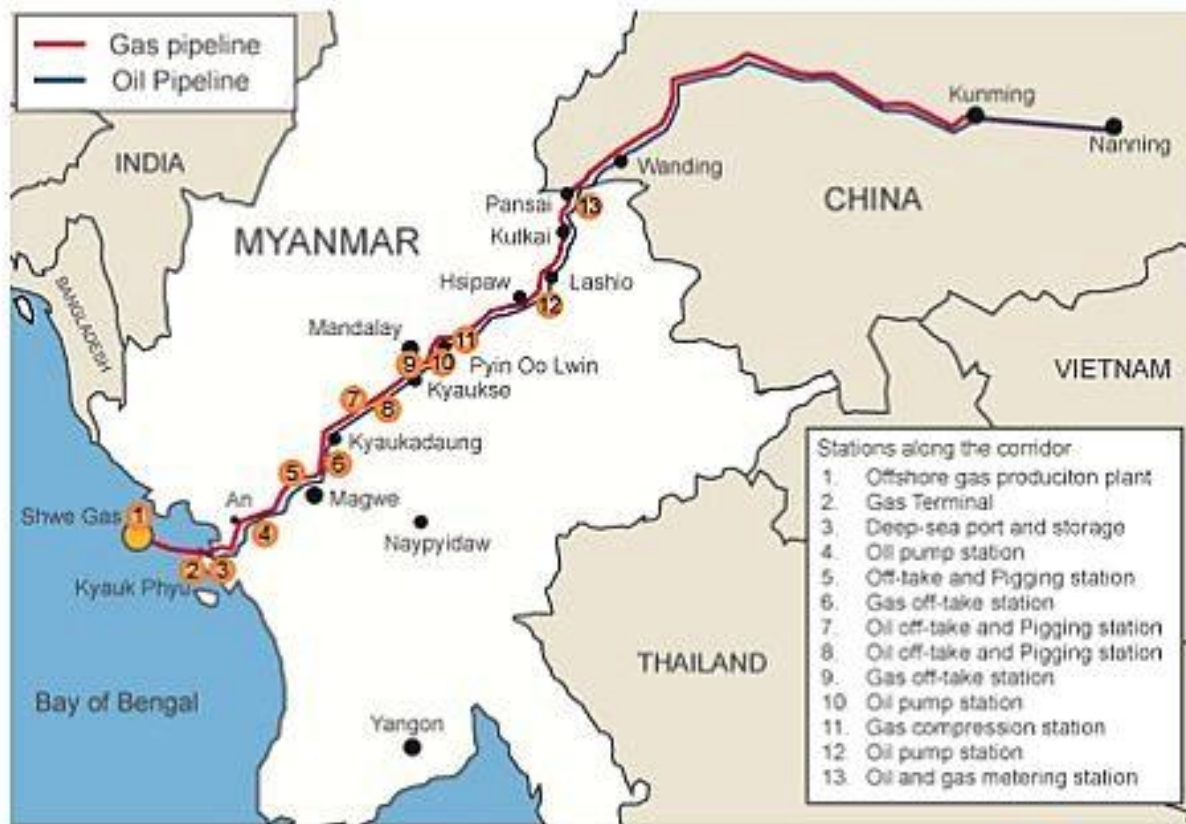
CHALLENGES OF CHINA RISING POWER ACROSS THE ASIAN LITTORAL





China's trans-Myanmar oil and gas pipelines

Pipeline's will bring 12 million tonnes of crude oil and 12 billion cubic metres of gas a year into China



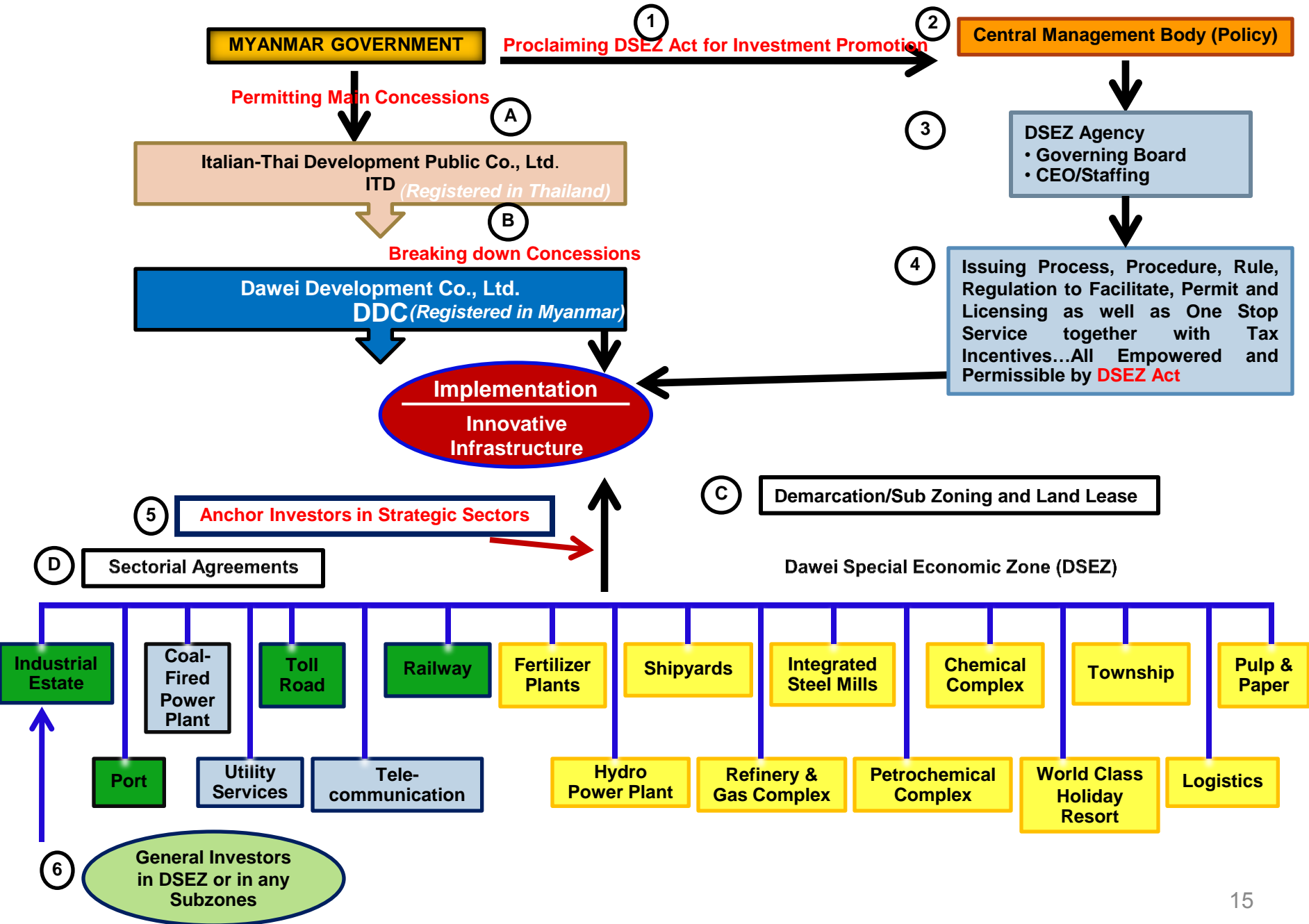
Source: shwe.org

Reuters graphic/Catherine Trevethan

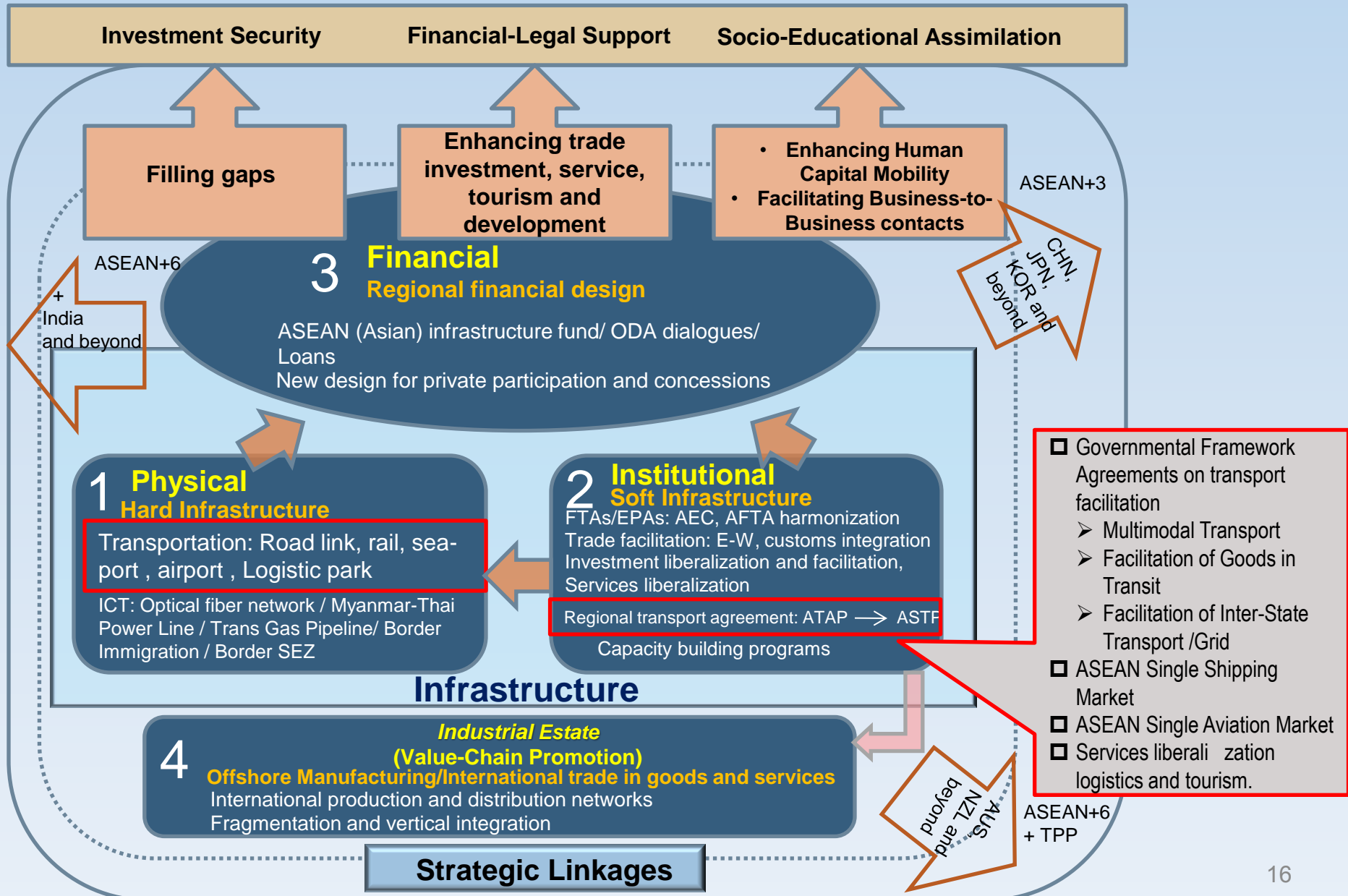
REUTERS

01/02/10

Strategic Framework for Dawei Project Implementation



Dawei Building Bloc at Bilateral level (Myanmar-Thailand):Implementing Dawei Project



Opportunities

- Openness/FTA-J curve
- The rise of Asia
- The Indian Ocean
- China & India
- European Corridor
- Open sky (2500 Boeing) 29% Asean

Asia

- Multi Economic Integration
- EAFTA ASEAN+3
- AEC (2015)
- Mekong Regional Cooperation

ASEAN

- G-G Bilateral Agreements

- DSEZ
- As Globe's Hub
- Economy of Scale (204 KM) / Scope (Estates/Port/Steel)

DAWEI

- Border Trades Migration
- Work force Migration
- Technocrat
- Hydro/oceannography conditions
- Local Laws/Finance
- Demarkation/Masterlease/sectorial

- Threat from Minorities
- Border conflict w/Burma

- NGO

Threats

World

- Natural Disaster & Climate change
- Big Country Sanctions
- Geo Political Tensions
- Economic Crisis
- The sovereign Risk
- World Trade/ Market volatility
- Currency (Yuan over heating)
- Fluctuating /global oil price

Grand Strategy

Micro Threat

Opportunity ~ Threats (Risks)

Small Port to be completed by Early 2013



Dawei Relocation Plan

M-Size Mock Up Relocation House



Dawei Relocation Plan

Relocation Area



Road Link Survey and Clearing



DAWEI SITE VISIT BY MYANMAR PRESIDENT AND THAI PRIME MINISTER



A sunset over a beach with a person walking in the distance. The sun is low on the horizon, casting a golden glow over the sky and water. The sky is filled with dark, dramatic clouds, and the water reflects the bright light of the sun. The beach is visible in the foreground, with a person walking in the distance.

“An Industrial Project That Could Change Myanmar”

The New York Times

Thank You

www.daweidevelopment.com

E-mail: ddc@itd.co.th

Tel: +662 716 1591